



Per Month £1,450 Per Month

1 Bedroom, Apartment - Retirement

4, Stokes Lodge 3 Park Lane, Camberley, Surrey, GU15 3FU

📞 0800 077 8717

✉️ sales@churchillsl.co.uk

🌐 churchillsl.co.uk

Churchill
Sales & Lettings
Retirement Property Specialists

Stokes Lodge

Stokes Lodge is a development of 61 one and two bedroom apartments ideally located on the edge of the main shopping centre of Camberley. The development features a Terrace Lounge leading out to a stunning Roof Terrace with outdoor seating, along with a Wellbeing Suite and Communal laundry room. Both the apartment and Lodge are heated by a modern high efficiency centralised communal gas boiler, the cost of which is included in the service charges.

Camberley offers a wide range of independent shops and high street names as well as a purpose built, modern entertainment complex. The Atrium features a range of shops and leisure facilities including a 9 screen cinema, bowling, health and fitness club, cafes and restaurants. Nearby, Frimley Lodge Park is a multi-award winning 'Green Flag' park and includes access to the Canal, a miniature railway, pitch and putt, Flourish Community Garden, BBQ hire, play areas and sport pitches. There are many options for health and fitness, which include two purpose built leisure centres – The Arena and Lightwater – private gyms, numerous golf courses and water sports on Mytchett Lake.

Transport facilities are excellent with regular bus services linking Camberley to the nearby areas of Sandhurst, The Meadows Shopping Centre, Bracknell, Farnham and Woking to name a few. Camberley Train Station offers services to Guildford, Ascot and London Waterloo.

The Lodge manager is on hand throughout the day to support the Owners and keep the development in perfect shape as well as arranging many regular events in the Owners' Lounge from coffee mornings to games afternoons.

A Guest Suite is available for your friends and family to stay in. In addition, you are entitled to use of the Guest Suites at all Churchill Living developments across the country. Prices are available from the Lodge Manager.

Stokes Lodge has been designed with safety and security at the forefront. The apartment has an emergency Careline system installed, monitored by the onsite Lodge Manager during the day and 24 hours, 365 days a year by the Careline team. Careline integrated intruder alarm, secure video entry system and sophisticated fire and smoke detection systems throughout both the apartment and communal areas provide unrivalled peace of mind.

Stokes Lodge is managed by the award winning Churchill Estates Management, working closely with Churchill Living and Churchill Sales & Lettings to maintain the highest standards of maintenance and service for every lodge and owner.

Stokes Lodge requires at least one apartment resident to be over the age of 60 and any second resident to be over the age of 55.



Property Overview

****ONE BEDROOM GROUND FLOOR
RETIREMENT APARTMENT WITH PATIO****

****SOUTH WESTERLY POSITION****

Situated in a great position within the development of Stokes Lodge is this delightful one bedroom ground floor apartment. The property benefits from a private patio with views overlooking the communal gardens. It has also recently had new carpets fitted throughout.

The living room offers ample space for living and dining room furniture. A French door opens to a private patio area and a further door leads through to the kitchen. Dual aspect window provide lots of natural light.

The kitchen offers a range of modern eye and base level units with working surfaces over and tiled splashbacks. There is a built in waist height oven, 4 ring electric hob, fridge and freezer. Windows provide light and ventilation.

The bedroom is a good sized double room with a built in mirrored wardrobe. A window keeps this lovely bedroom bright and airy.

The shower room offers a curved shower with handrail, a WC, wash hand basin with vanity unit beneath and a heated towel rail.

Perfectly complimenting this wonderful apartment is a useful storage cupboard located in the hallway.

This apartment simply must be viewed!



Features

- One bedroom ground floor apartment with patio
- Lodge manager available 5 days a week
- Terrace Lounge leading to roof terrace with outside seating
- Wellbeing suite and communal laundry room
- 24 Hour Careline system for safety and security
- Lift to all floors
- Owners private car park
- A Guest Suite is available for your friends and family to stay in. In addition, you are entitled to use the Guest Suites at all Churchill Living developments across the country
- South Westerly position & rent includes heating & water & sewerage rates
- New carpets throughout



Key Information

OVER 60's RETIREMENT APARTMENT

Council Tax Band C

Please check regarding Pets with Churchill Estates Management. Any consents given in relation to pets are subject to the terms of the lease and any further rules and regulations made by Churchill Estates Management.

LANDLORD PAYS: Service charges include: Careline system, buildings insurance, water and sewerage rates, apartment heating, communal cleaning, utilities and maintenance, garden maintenance, lift maintenance, lodge manager and a contribution to the contingency fund.

LANDLORD PAYS: Service charges include: Careline system, buildings insurance, water and sewerage rates, apartment heating, communal cleaning, utilities and maintenance, garden maintenance, lift maintenance, lodge manager and a contribution to the contingency fund.

Security Deposit

A security deposit equal to 5 week's rent will be payable at the start of the tenancy. This covers damages or defaults on the part of the tenant during the tenancy. It will be reimbursed at the end of the tenancy subject to the details of the agreement and the findings of the inventory check out report.

Holding Deposit

A holding deposit equal to 1 weeks rent will be payable on acceptance of an application. This will be held and used towards the first months rent

Please note: The holding deposit will be withheld if the applicant(s) or any relevant person (including any guarantor(s)) withdraw from the tenancy, fail a Right-to-Rent check, provide materially significant false or misleading information, or fail to sign their tenancy agreement (and / or Deed of Guarantee) within 30 days (or other deadline as mutually agreed in writing).

EPC Rating: C

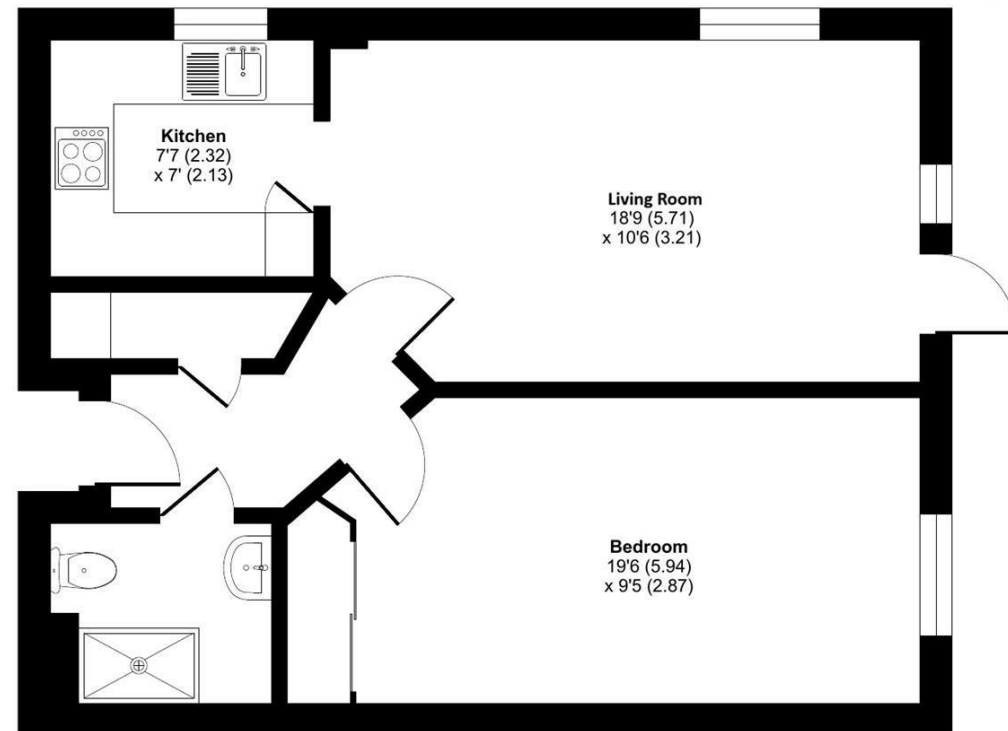
DESCRIPTION Measurements are approximate and some may be maximum on irregular walls.

CONSENTS We have not had sight of any relevant building regulations, guarantees or planning consents. All relevant documentation pertaining to this property should be checked with your legal advisor before exchanging contracts.

Property Particulars Disclaimer: These particulars are intended only as general guidance. The Company therefore gives notice that none of the material issued or visual depictions of any kind made on behalf of the Company can be relied upon as accurately describing any of the Specified Matters prescribed by any Order made under the Consumer Protection from Unfair Trading Regulations, 2008. Nor do they constitute a contract, part of a contract or a warranty.

Approximate Area = 548 sq ft / 50.9 sq m

For identification only - Not to scale



Floor plan produced in accordance with RICS Property Measurement 2nd Edition, incorporating International Property Measurement Standards (IPMS2 Residential). © n/checom 2026. Produced for Churchill Sales & Lettings Limited. REF: 1421418

0800 077 8717

sales@churchillsl.co.uk

churchillsl.co.uk



☎ 0800 077 8717

✉ sales@churchillsl.co.uk

🌐 churchillsl.co.uk

Churchill
Sales & Lettings
Retirement Property Specialists